



*Palmetta Shores*  
CHURCH

# Discipleship Pathway





*Palmetta Shares*

CHURCH

01

THE PATHWAY

02

CONNECT

03

BUILD

04

COMMIT

05

GROW

06

OWN

07

LEAD

08

MULTIPLY



# TABLE OF CONTENTS

# THE PATHWAY



**GROW**



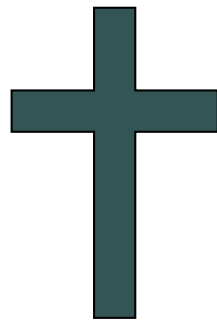
**COMMIT**



**OWN**



**LEAD**



**BUILD**



**MULTIPLY**



**CONNECT**

What are the first steps that everyone should take?

# CONNECT

1

## **Info Card**

---

Filling out the info card gets someone into the "system" so that vital communication can begin to flow.

2

## **New Comers Lunch**

---

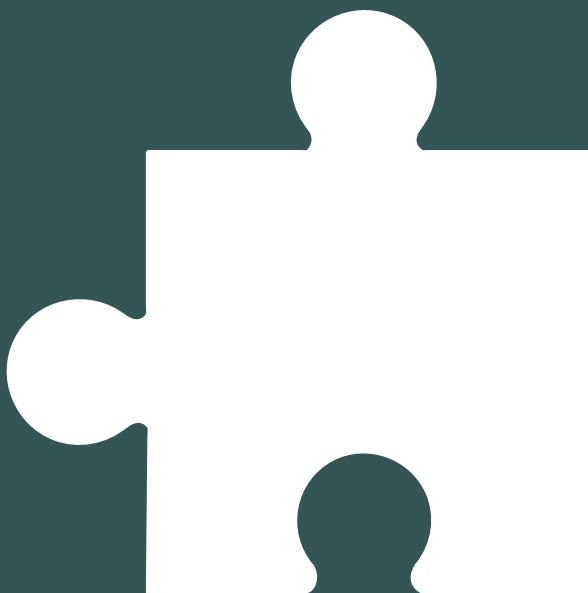
This is a monthly opportunity for those who are new to have a meal with some members of PSC.

3

## **Gospel Clarity**

---

We want everyone, whether they commit to PSC or not, to encounter the good news of Jesus Christ.



How can someone  
begin to build  
relationships?

# BUILD

1

## **Neighbor Project**

---

Every second Saturday of the month, this is an opportunity to spend quality time with other people in the church.

2

## **Sunday Seminars**

---

Throughout the year there will be Sunday evening Bible Study and fellowship.

3

## **Ministries**

---

Youth, Women's, & Men's ministry are all great ways to build relationships with others.



How does someone  
join the family?

# COMMIT

1

## **Baptism**

---

Profession of faith by immersion in and out of water symbolizing the death and resurrection of Jesus.

2

## **Membership Class**

---

A quarterly opportunity for new people to learn about the vision, mission, and values of PSC.

3

## **Membership Convo**

---

Follow-up to hear testimony, discuss coaching & groups, and make commitment to church membership.



How can someone  
take steps to  
become a mature  
disciple of Jesus?

# GROW

1

## **Coaching**

---

This is an opportunity to spend 8 sessions with a coach to learn the fundamentals of following Jesus.

2

## **Classes**

---

These are specific and short term deep dives into slices of life like finances, grief, and what we believe.



3

## **Groups**

---

Small groups and discipleship groups are designed for long term transformation through the word of God.



How does someone begin to take responsibility?

**OWN**

1

## **Serving**

---

Serving is where someone turns from being a consumer to becoming an owner in the ministry of PSC.

2

## **Mission Experience**

---

Intentional engagements with the lost and needy require steps of faith which push us towards God.

3

## **Testimony Class**

---

Learning to share our salvation testimony helps us to own the mission we have received from Jesus.



How does someone  
begin to  
intentionally  
influence others?

# LEAD

1

## **Leader Gathering**

---

This is a two year journey with other leaders designed to develop head, heart, and hands.

2

## **Co-lead**

---

The opportunity to take ownership alongside a current leader of a ministry or a small group.

3

## **Prayer**

---

Develop a commitment to maintaining a consistent prayer life on behalf of PSC.



How does someone  
become a disciple  
maker?

# MULTIPLY

1

## **Multiply Retreat**

---

Attend retreat to align heart and prioritize life for maximum discipleship impact.

2

## **Invite**

---

Establish the habit of inviting people into your life, into our church, and into the pathway.

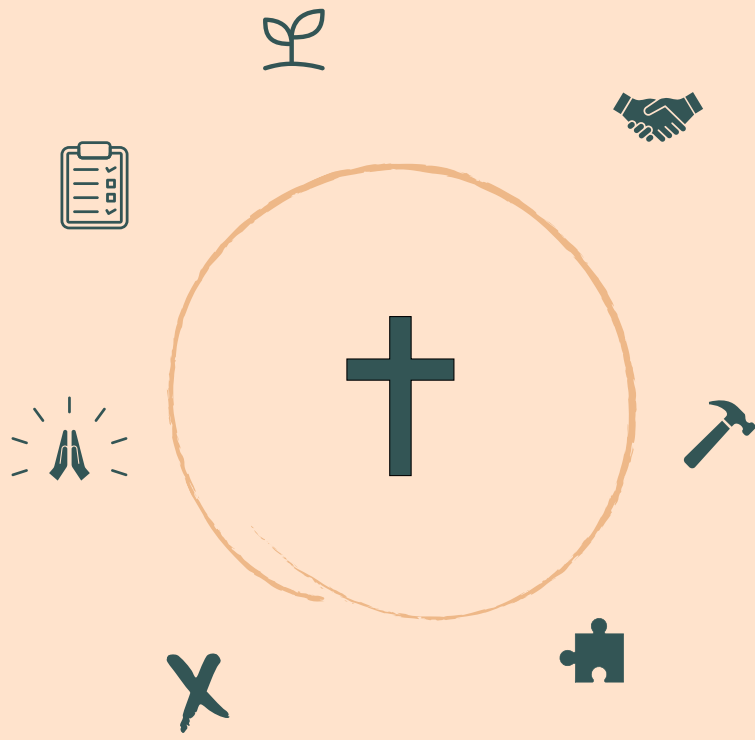
3

## **Engage Pathway**

---

Turn back to lead segments, own ministry, and encourage others along the pathway.





# *Palmetta Shares*

CHURCH

